

Edgewood Presbyterian Church

Newsletter—November 2024



Sorrow in a Season of Gratitude

“How long, O Lord? Will you forget me forever? How long will you hide your face from me? How long must I bear pain in my soul and have sorrow in my heart all day long?” In Psalm 13, David cries out to God, feeling abandoned, forgotten, mired in trouble. Some days, some seasons of life are like this, when all seems lost, heartache, devastation, and uncertainty surround us. As we waited for the first reports of damage from Hurricane Helene, anxiously waiting to hear from loved ones who had no electricity, no cell phone service, no way to communicate... As we wait for a diagnosis after so many tests, unsure what we might face or if the answer remains, “the tests were inconclusive”... As we say goodbye to loved ones who we don’t expect to see again with mortal eyes... As we wait for the votes to be counted and confirmed by the states and for the electoral college to officially mark the winner of the Presidential election... How long, O Lord?



It can be so easy to get stuck, to replay the chorus, “how long?”. Some of the psalms play this tune in verse after verse, but in Psalm 13, David turns fairly quickly to gratitude and praise. “But I trusted in your steadfast love; my heart shall rejoice in your salvation. I will sing to the Lord because God has dealt bountifully with me.” Despite the trouble that assailed him and weighed down his soul, David remembered God and how God had been steadfast and faithful in caring for him, in dealing bountifully with him.

Some might tell us to take a page out of David’s book, to learn a lesson from the psalm, to thank God and sing God’s praises no matter the circumstances we face. While gratitude in the face of adversity can be helpful advice for some, for others, such advice stifles, minimizes, and discounts our very real, very human reactions to the vicissitudes and challenges of life. Maybe... sometimes we need to sit with our sorrow, to scream out our anger and sense of abandonment, to be human. There is a time for gratitude, a time for praise, and songs of joy. But, maybe, that time is not yet. Maybe... now is a time for sorrow and grief.

November, the Thanksgiving season, in particular, can be challenging with constant reminders to count your blessings, to be grateful... If you are in a season where gratitude is on a far horizon, out of reach, that’s okay. As you are able, remember that God’s steadfast love and mercy are from everlasting to everlasting; that God knows your suffering and sorrow; that God hears your cries; that God has not abandoned you, but sits quietly alongside you as you struggle; and that God welcomes you with an embrace like that of a mother hen tending her chicks or a father welcoming the prodigal home. When you’re ready, when the season of sorrow eases or passes, you may find you can again speak words of gratitude, even if only as whispers.

In faith, hope, & love,

Sara

O God, with David we cry, “how long?” feeling lost and alone, frustrated and anxious. The constant barrage of well-meaning messages to be grateful leave us feeling guilty instead. Hold us always in your loving arms, even during times of despair and complaint, and remind us of your steadfast love so that we may, one day, again sing your praises.

Amen

Pastor's Office Hours

Sunday
Monday–Wednesday mornings
Saturday (various times)
919-770-5791 ~ sara.martin@edgewoodpres.org

Upcoming Sundays

- 11/3/24 “Solidarity in Mourning”
Ruth 1:1-18; Mark 12:28-34
All Saints Sunday
- 11/10/24 “When Enough is Enough”
1Kings 17:8-16; Mark 12:38-44
- 11/17/24 “Despair and Thanksgiving”
1Samuel 1:4-20; 1Samuel 2:1-10
- 11/24/24 “The One Who is to Come”
Revelation 1:4b-8; Daniel 7:9-10, 13-14
Reign of Christ Sunday
- 12/1/24 “Behold!”
Jeremiah 33:14-16; Luke 21:25-36
First Sunday of Advent

TREASURER'S REPORT

SEPTEMBER TOTALS

Receipts	\$ 17,505
Expenses	\$ 10,359
Special Offerings:	
Sara Wilson Scholarship Fund	\$ 305
Wounded Warriors	\$ 100
2¢ a meal	\$ 53

Scheduled Special Offerings

- 11/3/24 – 2¢ a Meal
11/17/24 – CUOC Turkeys
11/24/24 – Presbyterian Women Thank Offering

Head Usher for November
Jonathan Wester

LOOK INTO LUKE BIBLE STUDY

The same class will be taught with two options to attend:

Tuesdays at 7 p.m. &
Wednesdays at 11 a.m.

Just bring your Bible and yourself!

We have a few more weeks to **Look Into Luke** before we take a break for the holidays! Hope you'll join us on Tuesday at 7 pm or Wednesday at 11 am.

If you want to prepare, read the first chapter (s) listed; the second scripture is the focus-text for the lesson:

11/5 – The Cross
Chapters 19-23 Luke 23:32-49

11/12 – Emmaus
Chapter 24 Luke 24:1-53

11/19 – Conclusion

Watch for information on our next Bible study journey to begin in January!

Stewardship & Finance Committee



Stewardship

"God Can Do It: We Can Help"

If you have not yet turned in your 2025 stewardship pledge cards, please turn them in to the church office as soon as possible so we can better plan our budget for next year.

Jonathan Wester: Chair

Upcoming Event

Sunday, November 17, at Noon, in the Fellowship Hall

Thanksgiving Lunch

Turkey and ham will be provided.



Debra Wall: Fellowship Committee Chair

In Our Thoughts & Prayers

Prayer Family of the Week

- | | | |
|----------|----|---|
| November | 3 | Martha Maddox |
| | 10 | Teresa Mangum |
| | 17 | Rev. Sara & Adrian Martin
Micah, & Eli |
| | 24 | Ernestine & Darrell
Matthews |

BIRTHDAYS

IN



- | | | |
|----------|----|------------------|
| November | 1 | Alex McNeill |
| | 2 | Eddy McBryde |
| | 3 | Rusty Singer |
| | 3 | Barbara Rosser |
| | 7 | Mary Holder |
| | 16 | Makayla McBryde |
| | 17 | Kayden W McBryde |
| | 18 | Abby Edwards |
| | 23 | Wyatt McGehee |
| | 29 | Eddie Wade |

Your kindness
made a difference...



Thank You!

Your phone calls, your texts and most certainly the prayers were much appreciated during my surgery.

Nancy Mead



Winter Hats

scarves, mittens, & gloves

Winter will soon be upon us! So, we are collecting winter hats, scarves, mittens, and gloves - handmade or store bought - to donate to the CUOC to help our neighbors in Lee County.



Knitting hats & scarves

Don't know how to knit but want to learn? Know how to knit but want fellowship? Join us Saturday, November 9 at 10:00 a.m. in the Mary Olive Smith classroom as we use our hands and hearts to help our neighbors in Lee County!



Some supplies will be available, but if you have your own, please bring them!



Property & Grounds

We are making progress on our new ramp. The concrete was poured October 3. The handrail installation has been delayed, but should be completed soon. Then, only a final inspection and approval by the city will be needed before we can use it.

Johnny Sellars: Chair



PW December Mission Project

Items needed for "Breakfast Bag" project



Individual packets of instant oatmeal

Horizon shelf-life milk - 8 fl.oz.

Quart-size freezer bags

Individual packets of instant grits

Individual, mini boxes of cereal

The Presbyterian Women are collecting these items for a special CUOC project. They will be used to assemble "Breakfast Bags" at the November 11 circle meeting. The bags will be donated to CUOC for their Backpack Pals program. The food will provide meals to children over Christmas break. If you'd like to help, please make donations of these items before November 11. Monetary donations for the project will be accepted until December 9.

Donations can be dropped off at Edgewood on Sunday mornings, or send us a Facebook message to set up a time to deliver them to us.

Communications Committee

We continue our routine activities with the bulletin boards, worship service videos on Facebook, newsletters, the church website, and support other committees with special requests for printed material. In October, we printed 260 "Autumn Cards" requested by the PW for distribution to long care facilities.

Connie Wynn: Chair

Mission Committee

The Mission Committee, at the encouragement of Pastor Sara, has looked into ways in which we as a congregation can provide some ongoing support for the people/churches of Western NC. Our desire is to form a partnership of sorts with a Presbyterian church which was directly impacted by the flood generated by Hurricane Helene. My research showed Marshall Presbyterian Church of Marshall, NC was directly impacted. Sixteen feet of water from the French Broad River entered its back doors and flowed out its front doors leaving behind a foot or more of mud, muck, and debris. Everything inside the church, which serves about 80 members, was destroyed: carpets, books, computers, refrigerators, etc.

Their pastor said that the structure of the church is believed to be sound, the pews can be refinished, the stained glass windows are intact, and the piano was mostly spared.

The church does have flood insurance which, as I understand it, covers structural damage. One of the expenses the pastor told me was that once the interior is dried out, it must be treated for mold which seals the church for two to three weeks. This must be done twice. The cost.... between \$300,000 and \$400,000. Another example of the challenges the church faces going forward is how to redesign certain aspects of the church to prevent catastrophic damage from future floods, creation of those plans, replacement of all the literature, books, Bibles, print resources, office furniture, pulpit supplies, and the list goes on.

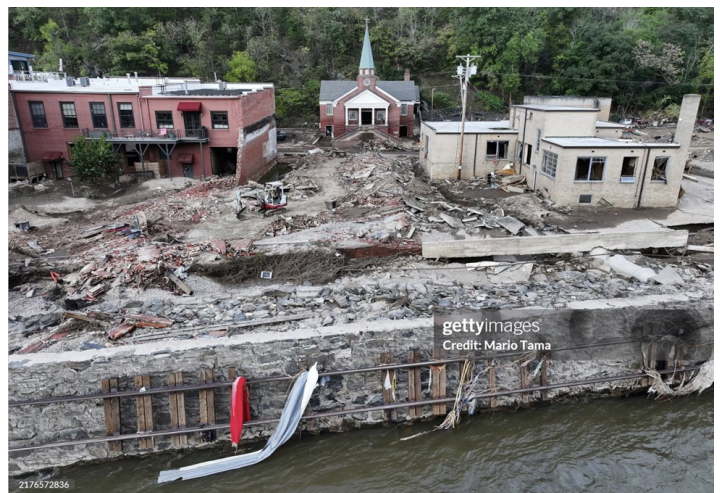
The Mission Committee proposed and the Session approved a partnership with Marshall Presbyterian Church, beginning with a monetary offering being collected until 11/17. Obviously we are not going to raise enough money to rebuild their church, but it will provide faces and people who we can see where our donations are going, let them know there are other Presbyterians who are

concerned for them and how the church is revitalizing.

If you search Facebook for Marshall Presbyterian Church, Marshall, NC and then "LIKE" the Facebook page, you can see daily entries on their recovery.

We understand that this is a financially demanding time for all of us and we simply ask you to give as you feel comfortable and able. Being a year-long mission, there will be opportunities all year long.

Steve Womack: Chair





ADOPT
AN ANGEL

Missions Committee

I brought information for 12 **Salvation Army Christmas Angels** to Edgewood on October 27. Thanks to your generosity, all 12 were adopted immediately. If you would like for me to get additional angels, please let me know and I will request more.

Donations for the adopted angles should be placed in our Fellowship Hall no later than December 4.

Steve Womack: Chair

CUOC Donations

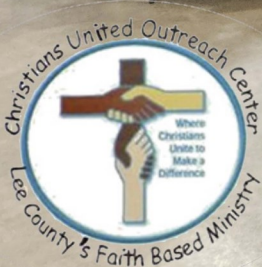
Beginning this month, we are asking you to donate a specific food item each month for CUOC. Doing so, simplifies sorting the items at CUOC. **This month**, we would like you to donate **pasta sauce or spaghetti sauce**. It is in high demand by the clients.



During the month of September, Edgewood donated 24 pounds of food to CUOC

CUOC 20th Anniversary Recognition Dinner

CUOC celebrated their 20th Anniversary at the Dennis A. Wicker Civic Center October 24, 2024. Edgewood attendees were Rev. Sara Martin, Connie and Jerry Wynn. Three Edgewood volunteers were recognized for their large number of hours of work during the last 18 months—Connie for having 501 volunteer hours. Nancy (383 hours) and Dave Mead (487 hours).



October 24, 2024



**Moderator:
Teresa Mangum**

October 14, 2024



**Bible
Moderator:
Dail Dowdy**



**Devotion:
Trish Sellars**



Food: Joyce McGehee, Anne Thomas, & Linda Porter

Dail Dowdy lead Lesson Two in the 2024-2025 PW/Horizon Bible Study: "Land Justice"

Presbyterian Women

NEXT MEETING

Ladies of all ages are invited to our next PW meeting at 2:00 PM, Monday, November 11, 2024. Connie Wynn will be Bible Moderator for Lesson Three, "Food Justice", in the 2024-2025 PW/Horizons Bible Study.

Ladies, please come and enjoy this time of fellowship and Bible Study!

Worship Service
Quilt Dedication
Sunday
 October 13, 2024



Quilt Mission

During the past year, the *Piece-Makers* sewing group has made over 35 quilts to donate to Levine Children's Hospital in Charlotte. They, along with some Edgewood members and Presbyterian Women knitted 45 hats to be donated to CUOC. They also made many stuffed animals to be given to Levine and to Central Carolina Hospitals.

The *Piece-Makers* group is led by Teresa Mangum with significant contributions from Marilyn Long, Katherine Brannon, Joan Bland, and Barbara Campbell. The group typically meets monthly in the Edgewood Fellowship Hall.



Christian Education Committee

On Saturday, October 26, we joined with First Presbyterian, Sanford, for their “Pumpkin Trail” Halloween event for community children. Passing out candy and glow-stick bracelets, we watched the joy spread across the faces of children in the light of the pumpkins lining the sidewalk in front of the church. Many thanks to Stephanie Sellars and her family in coordinating Edgewood’s participation in the event.

Mark your calendars for Friday, December 20, 6:30 pm, when we will host a Christmas Cookie Celebration for our children and youth. Watch for more details!

Jean McSwain—Chair



FIRST PRESBYTERIAN CHURCH PUMPKIN TRAIL

